

EndoBenchXT™



Now improved, the EndoBenchXT verifies endoscope image quality with greater performance, control and accuracy.

With new product features and enhanced software, the EndobenchXT allows even greater capability for medical and service professionals to verify endoscope quality.



LighthouseOptics.com

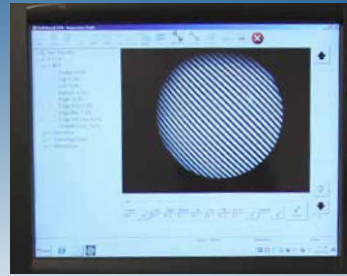

Lighthouse Imaging
Because precision is everything



Setup measurements quickly with included high resolution targets and precision positioner.



Adjust endoscope direction-of-view and field-of-view easily and accurately.



Measure and document endoscope image quality automatically.



High output external light source.

EndoBenchXT™

EndoBenchXT is a portable endoscope image quality test system for medical equipment QC testing (optimized for when portability is desired). Using custom designed opto-mechanical system and software, the EndoBenchXT evaluates and reports the parameters that are central to a clinical environment. Adapters and fixtures enable the measurement of a wide range of rigid, flexible and video endoscopes.

Enhanced features for greater ability to verify scope quality

- Extended direction of view measurement range
- Improved data interface
- 25% higher output external light source with improved control
- Up-to-date system software and high performance CPU
- MTF weighted average
- Ability to rotate the data collection axis
- Save and load setup information
- Optional extended measurement range for very bright scopes

We set a higher standard

Lighthouse Imaging Corporation is a leading provider of optical engineering and design services for the medical device industry.

We are an ISO 13485:2003 and ISO 9001:2008 certified, FDA registered medical device manufacturer specializing in minimally invasive surgical applications.

Learn more about us at LighthouseOptics.com.

Specifications	
Diameters:	2 -16mm
Lengths:	160 - 470mm
Angles of view:	50°-140° field of view, -5°- 80° direction of view
Endoscope types that can be tested:	
<ul style="list-style-type: none"> • Rigid endoscopes (laparoscopes, arthroscopes, etc.) • Flexible fiberoptic endoscopes • Video endoscopes (with VCR/NTSC output) 	
Available measurements:	
<ul style="list-style-type: none"> • Field of View (FOV) • Direction of View (DOV) • Apparent field of View (AFOV) • MTF (image sharpness) • Distortion • Transmission • Vignetting • Coloration • Eyepiece diopter • Fiber optic illumination brightness and distribution 	



Lighthouse Imaging
Because precision is everything

765 Roosevelt Trail, Suite 9 • Windham, Maine 04062 • Ph. 207.893.8233 • Fax. 207.893.8245 • info@lighthouseoptics.com

LighthouseOptics.com

